

# Install

## Reference Manual Relative to Version 580.01

### Contents

<b>Recent Changes .....</b>	<b>3</b>
Jan 2015 580.01 Respect custom priority settings for Recorder .....	3
Mar 2014 570.04 WSPSH .....	3
Nov 2012 550.03 SMTP .....	3
Jul 2012 550.01 Fortuna .....	3
Jun 2011 540.16 Add install of ContextArchive .....	4
May 2011 540.15 Safer 'Reorg' .....	4
Feb 2011 540.13 XHR .....	4
Jan 2011 540.09 New config variable CONFIG_CONTID .....	4
Jul 2010 540.07 Allow for Secopt SecAdmin authorised systems .....	4
Apr 2010 540.02 IOH .....	5
Apr 2010 540.01 SecAdmin checks .....	5
<b>Software Installation .....</b>	<b>6</b>
Getting started .....	6
The METAKEYS file .....	7
Program Installation .....	8
Getting On-line HELP .....	10
Selecting the Products to Install .....	10
Expired Keys .....	12
Configuration Information .....	13
Configuration Screens .....	14
Invalid Family or File .....	15
Copy and SL .....	16
File Conflicts .....	17
Optional Files .....	18
Informational Screens .....	18
Quit and Restart .....	19
Non Standard Software .....	19
HTTP .....	19
SMTP .....	20
XHR .....	20
WSPSH .....	20
FORTUNA .....	20
<b>Configuration file maintenance .....</b>	<b>21</b>
The CONFIG file .....	21

Running the INSTALL utility .....	22
No parameter (Full installation) .....	22
Menu .....	23
Keys .....	24
NewKeys .....	25
Config .....	26
NewDMS .....	29
Maint .....	31
Priority Variables .....	32
Software keys .....	33
<b>New Unisys DMS software.....</b>	<b>35</b>
<b>Running Metalogic Software .....</b>	<b>36</b>
Running JAMPACK .....	36
"SECTORS REQUIRED" handling .....	36
Full Squash of a Pack.....	36
Using JAMPACK from Supervisor and WaitWatcher .....	37
Running WaitWatcher .....	37
Running DBControl .....	37
Running SUPERVISOR .....	38
Quitting Supervisor and TRIM.....	38
Recompile & testing Opals.....	38
FLEX package .....	39
Recompile & test rules .....	39
<b>Keys and Config variables.....</b>	<b>40</b>
KEY_xx.xxx.xxssssss#####DBC .....	40
KEY_xx.xxx.xxssssss##### FLEXINQ .....	40
KEY_xx.xxx.xxssssss##### FLEX.....	40
KEY_xx.xxx.xxssssss##### JAM .....	40
KEY_xx.xxx.xxssssss##### SUP .....	40
KEY_xx.xxx.xxssssss##### TAPELIB .....	40
KEY_xx.xxx.xxssssss##### WAITWATCH .....	40
KEY_xx.xxx.xxssssss##### COPYWR .....	41
KEY_xx.xxx.xxssssss##### LOGCON .....	41
KEY_xx.xxx.xxssssss##### ODTCON .....	41
<b>Copyright .....</b>	<b>42</b>

# Recent Changes

This section of the manual highlights important new features available in the OPAL compiler and run-time 'machine', in reverse-chronological order. The information will be regularly updated every time the content changes.

## **Jan 2015 580.01 Respect custom priority settings for Recorder**

Install will now apply locally defined priority and control settings for MailLib and Recorder. The values are held in the following config variables.

SUP\_RECPRH Holds the priority for Recorder

SUP\_RECCP "TRUE" if Recorder should be a control program

MAIL\_PRI Holds the priority for MailLib

MAIL\_CP "TRUE" if MailLib should be a control program.

An ODTs MENU\_PRIORITY is available to set these values.

It is held in the 'enter' file \*OPALS/MENU\_PRI which can be loaded for the release container.

## **Mar 2014 570.04 WSPSH**

Add \*METALOGIC/WSPSH to Supervisor installation. An SL WSPSH is only done if the SL WSPSH was previously defined. WSPSH allows a Terminal Emulator on an iPad to connect to COMS over HTTP.

## **Nov 2012 550.03 SMTP**

If SL SMTP is defined, then SMTP is installed. To install SMTP the first time, RUN \*METALOGIC/SMTP on the Family which contains the Metalogic Software.

The POPCLIENT and POPSERVER may be installed in the same way.

## **Jul 2012 550.01 Fortuna**

If SL FORTUNA is defined, then FORTUNA is installed. To install FORTUNA the first time, RUN \*METALOGIC/FORTUNA/ARCHIVE on the Family which contains the Metalogic Software.

## **Jun 2011 540.16 Add install of ContextArchive**

Add installation of the METALOGIC/SUPERVISOR/CONTEXTARCHIVE which contains Custom Contexts.

## **May 2011 540.15 Safer 'Reorg'**

Previously the result of a NEWDMS SAVE was not checked. If the version of METALOGIC/OPALTAPELIB4 is not valid a save will fail. When a new release of OpalTapeLib involved a change to the DASDL the Equivalent of NEWDMS SAVE ; NEWDMS RESTORE (which initializes the database) was done. If the SAVE failed it was possible to end up with an empty database or if old 'Save' files existed an old version of the database. Now if the save fails an error is reported and an ABORT of the install is recommended.

A new command NEWDMS MERGE will load data to MEDIA and RULES from files created by NEWDMS SAVE or the TP DUMP command. It will not initialise the database and will only load data for tapes where the creation timestamp is greater than that in the database. Rules in the flat file will override Rules in the database. History is not changed. Data will be loaded from METATAPELIB/DUMP/MEDIA and METATAPELIB/DUMP/RULES. The files should be under the usercode running install and on the CONTROL file family. They can be created by U META/INSTALL NEWDMS SAVE or TP DUMP. The TP MERGE command may be used for the same function but will look for the files under the tape librarian usercode.

## **Feb 2011 540.13 XHR**

Add \*METALOGIC/XHR to Supervisor installation. An SL XHR is only done if the SL XHR was previously defined.

## **Jan 2011 540.09 New config variable CONFIG\_CONTID**

A new config variable CONFIG\_CONTID has been added. It holds the ID of the most recent container used to install software.

From Supervisor the following expression will return the title of that container: Ex.  
\$Config\_ContDir.Config&\$Config\_ContId.Config&" ON "&

\$CConfig\_ContFam.Config

## **Jul 2010 540.07 Allow for Secopt SecAdmin authorised systems**

On a system where the secadmin secopt is set to Authorized the DMSUPPORT and Reconstruct code files for the Tape Database are marked as non executable after being compiled. Install will now MP these code files to allow them to run.

## **Apr 2010 540.02 IOH**

Install IOH Libraries. Install HTTP if already SLED.

## **Apr 2010 540.01 SecAdmin checks**

If the Secopt SecAdmin is set to AUTHORIZED then any Unwrap performed in the Install process will not be able to reset the restricted flag unless Install is run from a SecAdmin usercode. Install now checks this flag and will abort if it is not run from a SecAdmin usercode and SecAdmin is Authorized.

# Software Installation

For our current customers, please note that a Metalogic release contains the most current version of any software that you may have already purchased from us. The METALOGIC/MAGUS library that is contained within the release will continue to function for the products you have purchased even after any products on trial, that you have been using, have expired.

## Getting started

All METALOGIC software products are installed by running a single standard program called 'OBJECT/META/INSTALL'. It sets up the products by looking around on the system, asking questions of the user doing the installation, and copying the files it needs from the release media.

**Do not be deceived by the simplicity of installing software with this program. Although all products can be installed manually, in some cases it is a long and involved process.**

Please use a Privileged Usercode, which has a family equation assignment. You should be logged on to Candé or MARC when adopting the following sequence of instructions.

If the Secopt SecAdmin is set to AUTHORIZED then any Unwrap performed in the Install process will not be able to reset the restricted flag unless Install is run from a SedAdmin usercode. Install now checks this flag and will abort if it is not run from a SecAdmin usercode and SecAdmin is Authorized.

Software distribution is by downloading a container from the Metalogic web site. An email containing the URL of the container will have been sent to you. The file you download from our web site will be either a .exe or .zip file. Download the file to a PC and either run the .exe or unzip if a .zip file. Transfer the unpacked file to the MCP system.

From CANDE enter:

```
WFL UNWRAP *OBJECT/META/= OUTF <container name>  
TO DISK(RESTRICTED=FALSE)
```

<container name> will be supplied in the above email..

When using the above UNWRAP, your primary family is a convenient family to work from. The space requirements will be minimal — in most cases less than 3000 sectors.

Two files will be unwrapped:

```
*OBJECT/META/INSTALL  
*OBJECT/META/INSTALL/SCREENLIB
```

The first file, OBJECT/META/INSTALL, is a utility code file, which is used to install all Metalogic software and to load keys. The second file supports the screens used in the Install utility. Keys are held in a file \*METAKEYS/<container name> which will be Unwrapped by Install if it is not already resident.

**Do not UNWRAP \*= from the container. The INSTALL program will UNWRAP any other required files directly to their proper destination.**

After the UNWRAP finishes, you should keep the container available, as it will be needed for the installation.

Once the Install program has been run the container will be moved to a specified directory and Family.

**The location is specified on the first screen of the Install program.**

```
Metalogic S.a R.L.
Install Utility
52.520.26

Software Installation

Installing on Host POWEREDGE, Machine: LX100 (1)
Magus version ..... 53.530.05
INSTALL will load software from the following source:
Container Name      META_2131
Container Family    >LOGS
Container Directory >M\METALOGIC/

Enter Normal to install all software or Custom to select software.
Enter <ctrl>99<xmt> For help

Action: >NORMAL
Normal Custom Log or Quit
```

**In the above example META\_2131 would be moved to \*METALOGIC/  
META\_2131 ON LOGS**

## The METAKEYS file

The METAKEYS file contains the details of what software is in the release and how long it will run. The file is automatically unwrapped during the INSTALL process; it may also contain the keys that allow the various products to run on different machines.

You can "inspect" the METAKEYS file by using the following command:

```
LIST *METAKEYS/<container name>
```



## You should get a response looking like —

Your Metalogic ID

Date of Release

Metalogic Release Version

Magus Version

```
100 @ META          29 January  2008      0 2131 5353005  W
200  >>Jampack                      SYM 2008050  00
300  # 2=LX100:36AG7QRMELQY 1234=LX100:32NXQQR6CD7Y 1=LX100:36AQ7R4V2YY
400  >>Supervisor                      SYM 2008142  01
500  # 2=LX100:1CQLKAVA6KL1 1234=LX100:1LW3KAVVD231 1=LX100:1C7N2AVAPJ31
600  >>CopyWrite                      SYM 9999365  02
700  # 2=LX100:YKWIJAY6HB1I 1234=LX100:WMNZJAX5DS1I 1=LX100:YKEA1RYPYN1I
```

Product

System Serial

Key

Expiry Date

Permanent Date

System Style

If your Machine Type/Serial Number combination is missing from the METAKEYS file, you will still be able to use the products on this release by typing in a key when it is asked for. METALOGIC will often send short-term trials of software that was not ordered. Please feel free to use them as long as they last. It is one of our ways of saying thank-you, and at the same time keeping you informed about our other products.

If something is missing from your order or trial, please contact METALOGIC or your sales agent immediately.

## Program Installation

The next stage of the installation is to run the Install program, i.e. \*OBJECT/META/INSTALL. This program does everything needed to set up the files for running the software, doing any necessary UNWRAP from the release container. It does NOT run the software unless requested, so you can do the installation when you receive the container, and delay the actual test till later. Install can be executed from CANDE by entering:

### U META/INSTALL

This will start an interactive session to perform the Install. If an Install of a new release is being done then an alternative mechanism is available.

### U META/INSTALL BATCH

Will perform the install without asking any question. All information required, will be taken from the answers given in the previous Install, which are held in the Configuration File. If any required answers are missing from the Configuration File, then the Install will abort.

### U META/INSTALL VERIFY



The above command will simulate a BATCH run. It does not load or quit any software, but will report any errors which would stop a Batch Install. The following log file can be examined to confirm the settings which would have been used:

#### **\*OBJECT/META/INSTALL/LOG**

INSTALL will immediately fail if the session or job usercode is not PRIVILEGED. If the program returns with:

**METALOGIC INSTALL must be run from a PRIVILEGED Usercode**

You should try again with a different usercode or have your System Administrator to make the usercode you are using privileged, if only temporarily.

If INSTALL returns with:

**METALOGIC INSTALL must be run from a station that allows SYSTEMUSER privileges**

The most likely cause is that you are running INSTALL from a station that is not allowed to perform SYSTEMUSER functions (i.e. SL'ing system libraries). Either have your System Administrator remove the restrictions from the terminal, or run META/INSTALL from a terminal that doesn't have this restriction.

INSTALL is intended to run on a Unisys T27 compatible terminal or emulator.

**When run with no parameter, a software install is assumed. The 'home' screen looks like:**

```
Metalogic S.a R.L.                                     52.520.26
Install Utility

Software Installation

Installing on Host POWEREDGE, Machine: LX100 (1)
Magus version ..... 53.530.05
INSTALL will load software from the following source:
Container Name      META_2131
Container Family    >LOGS
Container Directory >METALOGIC/

Enter Normal to install all software or Custom to select software.
Enter <ctrl>99<xmt> For help

Action: >NORMAL
Normal Custom Log or Quit
```

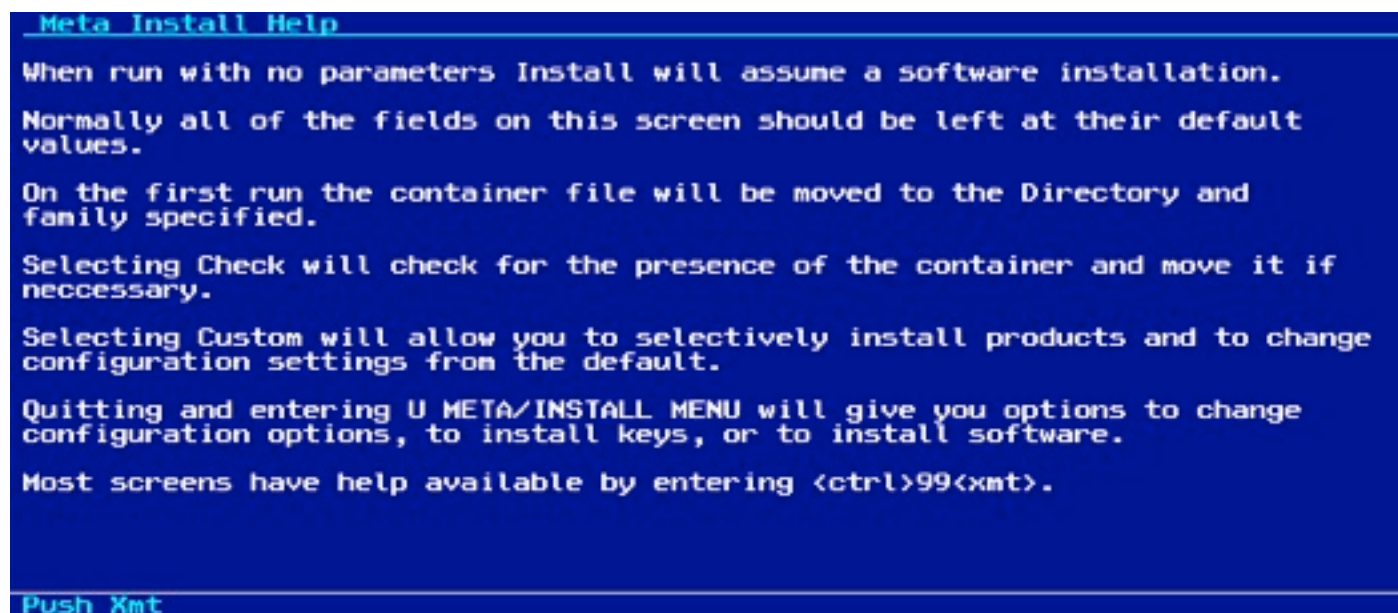
**When installing for the first time the Action field is pre-filled with 'CUSTOM'. On subsequent installation runs, it is pre-filled with the text 'NORMAL'.**

## Getting On-line HELP

On most pages the keyboard sequence <CTRL:>99<XMT> gives a help screen.

On all pages the keys <CTRL>00<XMT> will refresh any screen overwritten by accident.

### Example of help for the first screen



```
Meta Install Help

When run with no parameters Install will assume a software installation.
Normally all of the fields on this screen should be left at their default
values.

On the first run the container file will be moved to the Directory and
family specified.

Selecting Check will check for the presence of the container and move it if
neccessary.

Selecting Custom will allow you to selectively install products and to change
configuration settings from the default.

Quitting and entering U META/INSTALL MENU will give you options to change
configuration options, to install keys, or to install software.

Most screens have help available by entering <ctrl>99<xmt>.

Push Xmt
```

## Selecting the Products to Install

If a CUSTOM install has been selected, the following screen allows the selection of the products to be installed. An 'X' in the field beside individual Product name will indicate that the product will be installed, unless otherwise instructed.

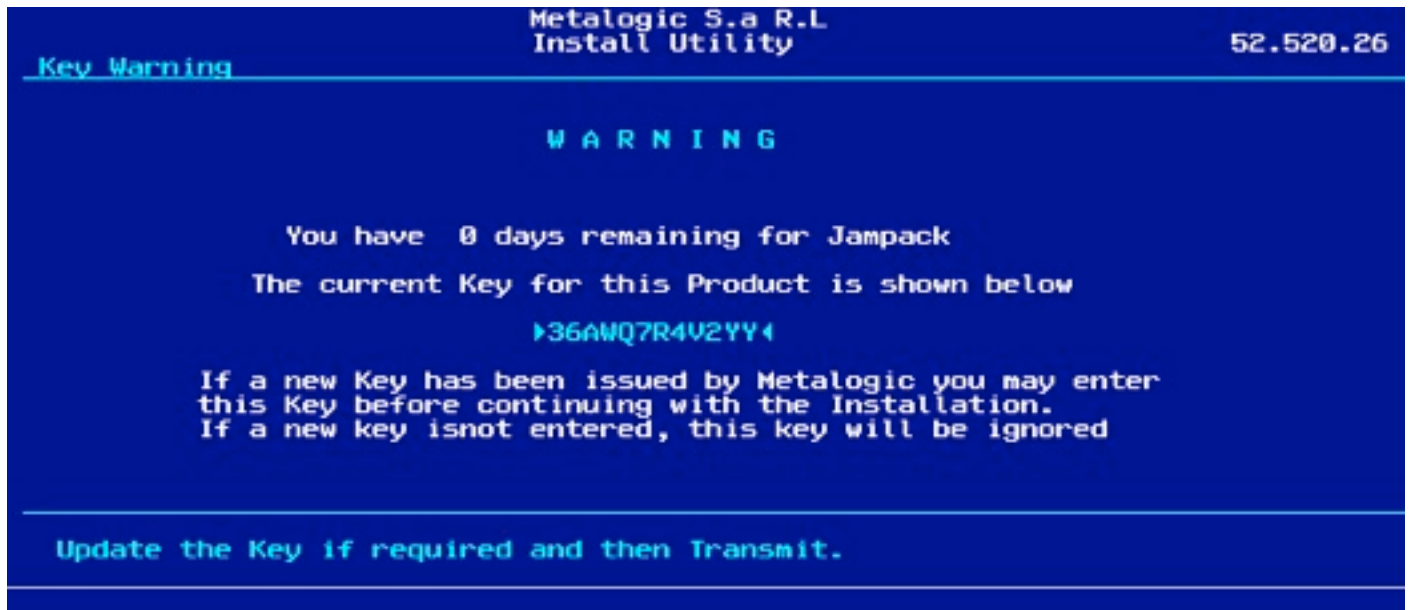
By default, INSTALL will only attempt to load and configure products that have been detected in the METAKEYS file. It is not possible to install other products from

**This screen is not shown in a Normal install. In a Normal install it is assumed that all products will be installed**

Metalogic S.a R.L		52.520.26
INSTALL Utility		
<u>Product selection</u>		
Please mark with an 'X' the products you wish to install or upgrade.	Jampack	>X<
	Supervisor	>X<
Please Xmt from the Home position when ready	CopyWrite	>X<
	TRIM	>X<
	Waitwatcher	>X<
	ODTcontrol	>X<
	DBcontrol	>X<
	FLEX Inquiry	>X<
	Full FLEX	>X<
	Logcontexts	>X<
	CopyMost	>X<
	Mail Lib	>X<
		><
		><
	><	
Action: >Ok		<
Ok / Quit / Log		

## Expired Keys

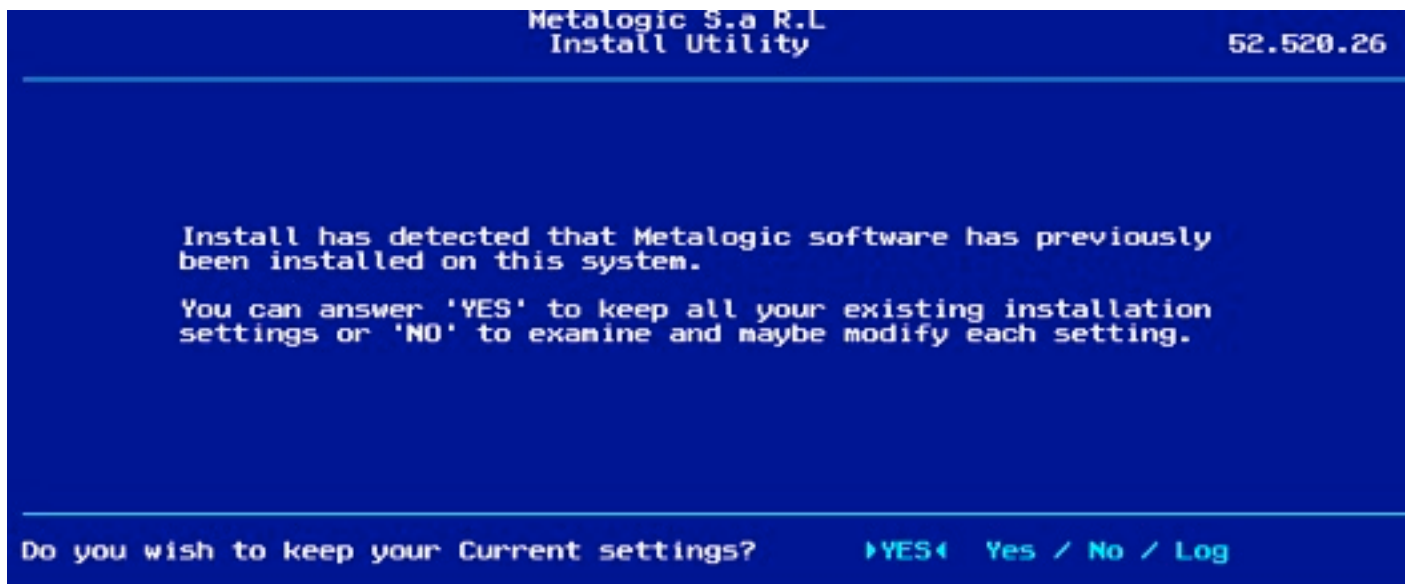
If any of your software keys have expired or are near expire soon, you may see a screen like the following:



This allows you to enter a key provided to you by email from Metalogic.

## Configuration Information

If you have installed Metalogic software on this system in the past you will see the following screen:



If you are happy to keep your current configuration, then enter Yes. If you wish to make changes to your current configuration, then enter No.



## Configuration Screens

If you answer No, or if some required information is not in the Configuration File, you will be presented with one or more screens, requesting configuration data. One each of these screens <ctrl>99<xmt> will give additional information about the settings requested.

Metalogic S.a R.L		52.520.26
Install Utility		
<u>General Options</u>		
These are general environment options used by the MAGUS library and all Metalogic software.		
1. Family where *SYSTEM/= files reside? ....	DISK	←
2. Family where Metalogic code files reside? .....	DISK	←
3. Family for MAGUS & CONFIGURATIONDATA files (Default H/L family) .....	DISK	←
4. Family where Metalogic LOG files reside? (Default DL LOG family) .....	DISK	←
5. Width of print lines in reports? .....	132	Range 1<132<132
6. Print lines per page in reports? .....	66	Range 1<66<66
7. Use US-style dates (MM/DD/YYYY) .....	FALSE	TRUE/FALSE
8. Company name to be used in reports? ..	METALOGIC METAMCPB	←
Action: OK		
OK / Quit / Log		

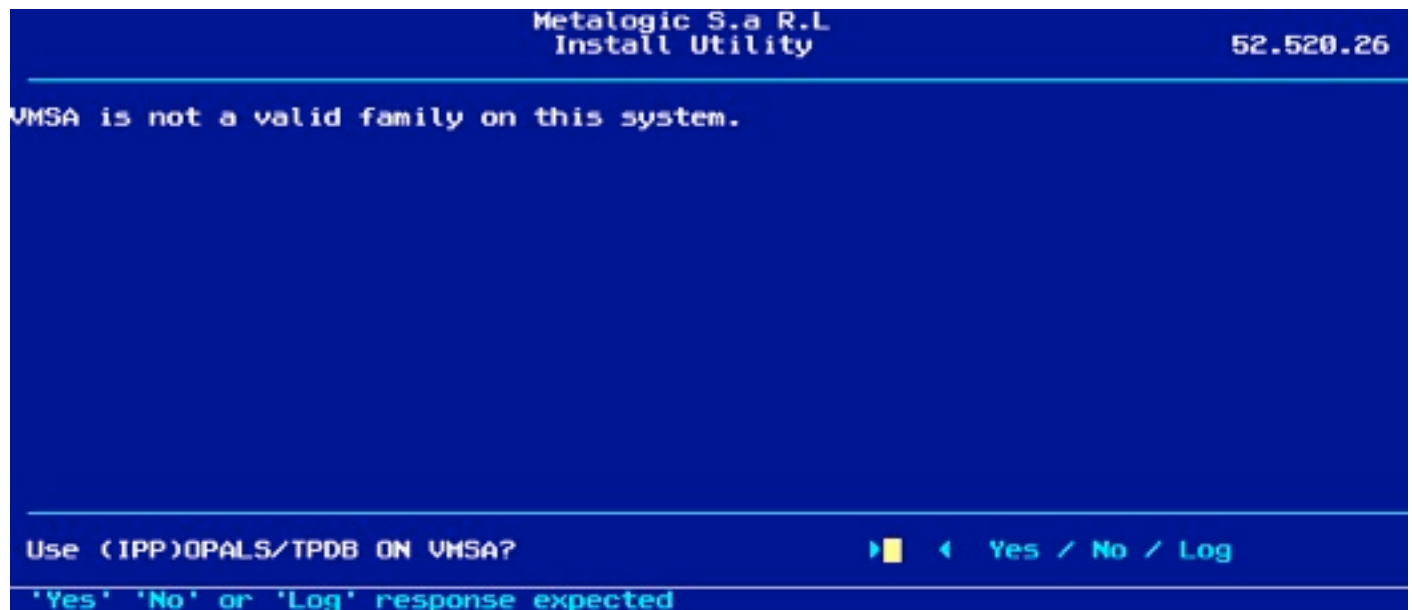
<ctrl>99<Xmt> gives

<u>General Options Help</u>
1. The Install program may need to access certain system files, (SYSTEM/BINDER, SYSTEM/PRINT/SUPPORT, etc). This field should be the family where those are kept. Normally DISK.
2. You may specify the family where all Metalogic code files should be stored. Normally we would suggest DISK, or the family where system files are kept.
3. You have the option to keep the MAGUS library and its configuration file on an alternate family. METALOGIC/MAGUS and METALOGIC/MAGUS/CONFIGURATIONDATA are critical to all Metalogic software. We suggest the Halt/Load unit.
4. You can specify the family used for Metalogic's own LOG files, currently MAILLIB and SUPERVISOR. The default is set to DL LOG.
5. You may specify the default page width, in characters, used in all reports.
6. You may specify the default page length, in lines to be used in reports.
7. This allows system-wide date formats to be selected.
8. You can specify a company name to be used on certain Metalogic reports.
Push Xmt

## Invalid Family or File

When filling in configuration details, any file or family specifications are checked to see if the file or family exists.

**A screen like the following may be shown.**

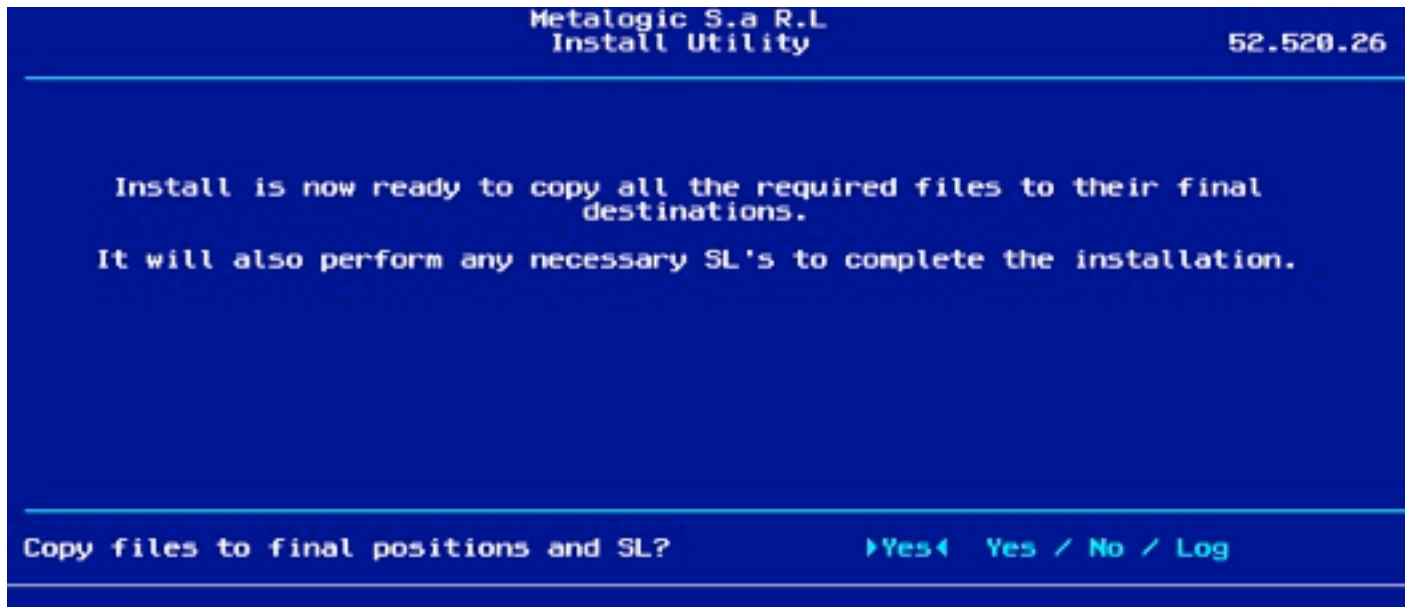


**Answering Yes will accept the specified value. Answering No will return you to the config screen to allow you to correct the value.**



## Copy and SL

Once any configuration questions have been answered the following screen is presented.



At this point it may be useful to use the Log command to review the setting which have been chosen. If any are not as you intended then quit the Install and rerun it.

## File Conflicts

The install program tries to ensure that a new version of a program is not accidentally overwritten by an older version. If such a possibility is detected, then a screen like the following one is presented:

```
Metalogic S.a R.L.                                     52.520.26
Install Utility

File version conflict
New: *METALOGIC/SUPERVISOR OUTOF *METALOGIC/META_2131 FROM LOGS:
      CYCLE=530.  VERSION= 14.
      CREATION: 28/01/2008 13:29:51.4.
Old: *METALOGIC/SUPERVISOR ON DISK:
      CYCLE=999.  VERSION= 22.
      CREATION: 15/02/2008 12:52:48.0.

Do you want to overwrite the existing File?    ▶Yes◀  Yes / No / Log
```

This gives you the choice of which file to use.

## Optional Files

There are some files, which though not required in order for the software to function, can be useful to users. The following screen gives the option of whether to load them or not.

```
Metalogic S.a R.L.                                     52.520.26
Install Utility

Install can unwrap
All EXAMPLES/SUPERVISOR=, OPALS/= and MEMO/= files
All Examples/Flex/= files
to Usercode META on Family DEV
*METALOGIC/FLEX/DEFAULTREPORTS/= to DISK

Do you want INSTALL to unwrap these files?      >0 < Yes / No / Log
```

## Informational Screens

One or more screens like the following may be shown. These vary based on the software which is licensed and only need to be acknowledged by hitting <xmt>.

```
Metalogic S.a R.L.                                     52.520.26
Install Utility

If you use the PRINTLABEL utility, it may be necessary
to restart it if the codefile has changed.

Please press Transmit to continue.                  >0 < LOG / any other input
```

## Quit and Restart

The final stage of installation is to quit and restart any currently running software.

**When you are happy to do that, enter Yes on the following screen.**

```
Metalogic S.a R.L.                                     52.520.26
Install Utility

To complete the installation it is necessary to quit and restart any Metalogic
software currently running.

Please reply 'YES' when you are ready for Install to perform the Quit and
Restart.

Ready to Quit and Restart                                YES Yes / No / Log
```

**Before answering yes you may want to review the Log.**

```
Metalogic S.a R.L.                                     52.520.26
Install Utility

Log
"OPALTAPELIB"
10:58:30.4 Msg:PREVIOUSLY DONE
10:58:30.4 ODT:SL OPALTAPELIB =*METALOGIC/OPALTAPELIB4 ON DISK
10:58:30.4 Msg:CODEFILE ALREADY ASSOCIATED WITH THIS FUNCTION
10:58:30.4 ODT:MP *METALOGIC/SUPERVISOR/PRINTLABEL ON DISK +PU
10:58:30.5 Msg:PREVIOUSLY DONE
10:58:30.5 Out Ask C17: Q=Please press Transmit to continue.;
10:59:35.1 In Ask C17: Ans=OK;
10:59:35.1 ODT:SL TAPEMANAGER=*METALOGIC/TAPEMANAGER ON DISK
10:59:35.2 Msg:CODEFILE ALREADY ASSOCIATED WITH THIS FUNCTION
10:59:35.2 ODT:MP *METALOGIC/FLEX/LIBRARY ON DISK +PU +SECADMIN
10:59:35.2 Msg:PREVIOUSLY DONE
10:59:35.2 ODT:SL FLEXLIB =*METALOGIC/FLEX/LIBRARY ON DISK
10:59:35.2 Msg:CODEFILE ALREADY ASSOCIATED WITH THIS FUNCTION
10:59:35.2 ODT:MP *METALOGIC/FLEX/FAMILYMANAGER ON DISK +PU
10:59:35.3 Msg:PREVIOUSLY DONE
10:59:35.3 Out Ask C17: Q=Ready to Quit and Restart;
11:00:32.4 In Ask C17: Ans=LOG;
11:00:32.4 -- END Install session: 19 FEBRUARY, 2008 at 10:46:02 --

Action >-          < Spcfyr or Pr / Log / Quit / -
```

## Non Standard Software

There is some optional Metalogic software which Install will not install automatically but will install new versions if already installed.

### HTTP

Installed if HTTP is SLed. Allows Supervisor to serve web pages.

## **SMTP**

If SL SMTP is defined, then SMTP is installed. To install SMTP the first time, RUN \*METALOGIC/SMTP on the Family which contains the Metalogic Software.

The POPCLIENT and POPSERVER may be installed in the same way.

## **XHR**

Installed if XHR is SLed. Provides a mechanism for sending XML HTTP Requests from METALOGIC Software to the Internet.

## **WSPSH**

An SL WSPSH is only done if the SL WSPSH was previously defined. WSPSH allows a Terminal Emulator on an iPad to connect to COMS over HTTP.

## **FORTUNA**

If SL FORTUNA is defined, then FORTUNA is installed. To install FORTUNA the first time, RUN \*METALOGIC/FORTUNA/ARCHIVE on the Family which contains the Metalogic Software.

# Configuration file maintenance

The INSTALL utility asks the user various questions about the environment that the METALOGIC software is expected to run in. Each component of software extracts these run-time parameters from a special data file, hereafter referred to as the CONFIG file, which is maintained by various components of Metalogic software but, in particular, INSTALL. Please note also that all software keys for all licensed systems are held in this file as config variables; the format of these keys is described in more detail later in this document. See [Software Keys](#).

## The CONFIG file

The title of the file is constructed from the SL-ed file title of the MAGUS library with a suffix of CONFIGURATIONDATA. For example, the ODT command 'SL MAGUS ' would typically return

```
SL  MAGUS = *METALOGIC/MAGUS ON PACK
```

The CONFIG file would then be called:

```
*METALOGIC/MAGUS/CONFIGURATIONDATA ON PACK
```

Because this file is essential to the successful management and running of all the METALOGIC software, it is strongly recommended that this file is backed up on a regular basis. The CONFIG file should only be maintained by the INSTALL utility; although the file is viewable by CANDE users, be advised that tampering with the file using standard CANDE editing commands can be dangerous.

# Running the INSTALL utility

U META/INSTALL		
Menu		
Keys		
Newkeys		
Config		
NewDms		
	Merge	
	Save	
	Restore	
Maint		
Batch		
Verify		

## No parameter (Full installation)

A full install run should always be performed upon receipt of a new release. This process will load the latest keys and release the software from the release onto the correct locations on the system. This process is outlined in the Overview-Getting Started section of chapter 1.

To perform a full install enter from a privileged Usercode on CANDE:

```
U META/INSTALL
or
U META/INSTALL MENU
```

Followed by selecting item 3.



## Menu

### U META/INSTALL MENU

Gives the Screen.

```

Metalogic S.a R.L
INSTALL Utility
52.520.26
Main Menu
Please select the function you wish to use:
1. Reload software keys from METAKEYS file (KEYS)
2. Modify existing keys from fax or email (NEWKEYS)
3. Install/upgrade a Metalogic software release
4. Configuration variable maintenance (CONFIG)
5. Upgrade DMSII software for TRIM only (NEWDMS)
6. Non Standard Config Maintenance (MAINT)

On any screen entering <Ctrl>99<xmt> will show help screens,
entering <Ctrl>00<Xmt> will refresh the current screen.

Action:  ▶  ◀
          Log / Spcfy on entry / Enter Number / Quit
```

## Keys

U META/INSTALL KEYS

Or

U META/INSTALL MENU

Followed by selecting item 1.

**Gives the screen:**

```
Metalogic S.a R.L.                                     52.520.26
Install Utility

Keys from Software Label

This is a KEYS installation only.

MetaKeys Magus 53.530.05
Current Magus 53.530.05

INSTALL requires a METAKEYS file compatible with
the current version of MAGUS. Both this codefile and
the METAKEYS file should be loaded from the latest
Metalogic Container.

INSTALL will automatically restart the MAGUS library after
the keys have been updated and then terminate.

>OK      1
OK / Previous / Log / Quit
```

**This is used to load keys from a new METAKEYS file provided by Metalogic.**

## NewKeys

U META/INSTALL NEWKEYS

Or

U META/INSTALL MENU

Followed by selecting item 2.

Give the screen:

Key Modification 53.530.05		Metalogic S.a R.L		Live Magus 53.530.05	
You may update the Key associated with each software item with the 12-character Key that you will have received from Metalogic.	JAMPAK	▶36AWQ7R4U2YY◀	21	MAY	2008
	SUPERVISOR	▶1C7N2AVAPJ31◀	21	MAY	2008
	COPYWRITE	▶YKEA1RYPYN1I◀	21	MAY	2008
	TRIM	▶13TBAYX6CITV◀	21	MAY	2008
	WAITWATCHER	▶1152JGRC7TFA◀	21	MAY	2008
	ODTCONTROL	▶YMDB63YNHPDP◀	21	MAY	2008
	DBCNTROL	▶4Y6JUPWSH2KA◀	21	MAY	2008
	FLEX INQUIRY	▶2U65WY2CMFVQ◀	21	MAY	2008
	FULL FLEX	▶U3DSHDYHDVJW◀	21	MAY	2008
	LOGCONTEXTS	▶3UGTZ5RCUXF1◀	21	MAY	2008
	COPYMOST	▶53DYKT3E4N6Z◀	21	MAY	2008
	MAIL LIB	▶			Invalid
NOTE: Each Key *MUST* be compatible with the MAGUS version shown above.					
Action: ▶Update					
Update / Restore / Previous / Log / Quit					

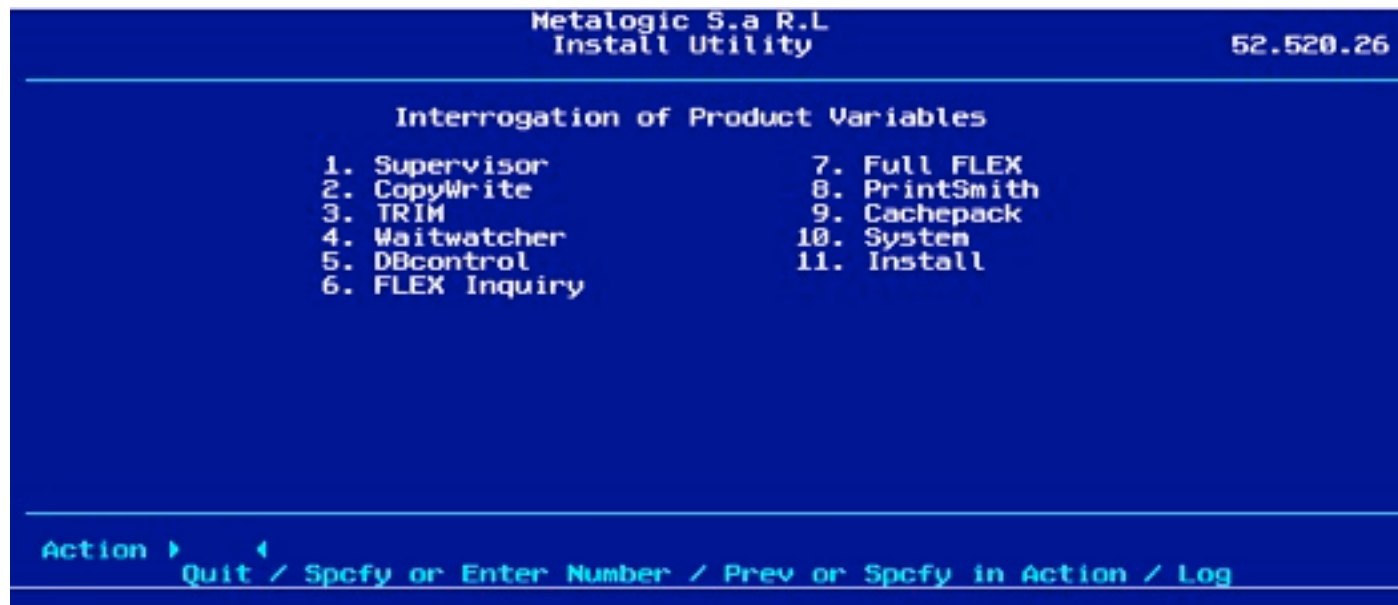
## Config

U META/INSTALL Config

Or

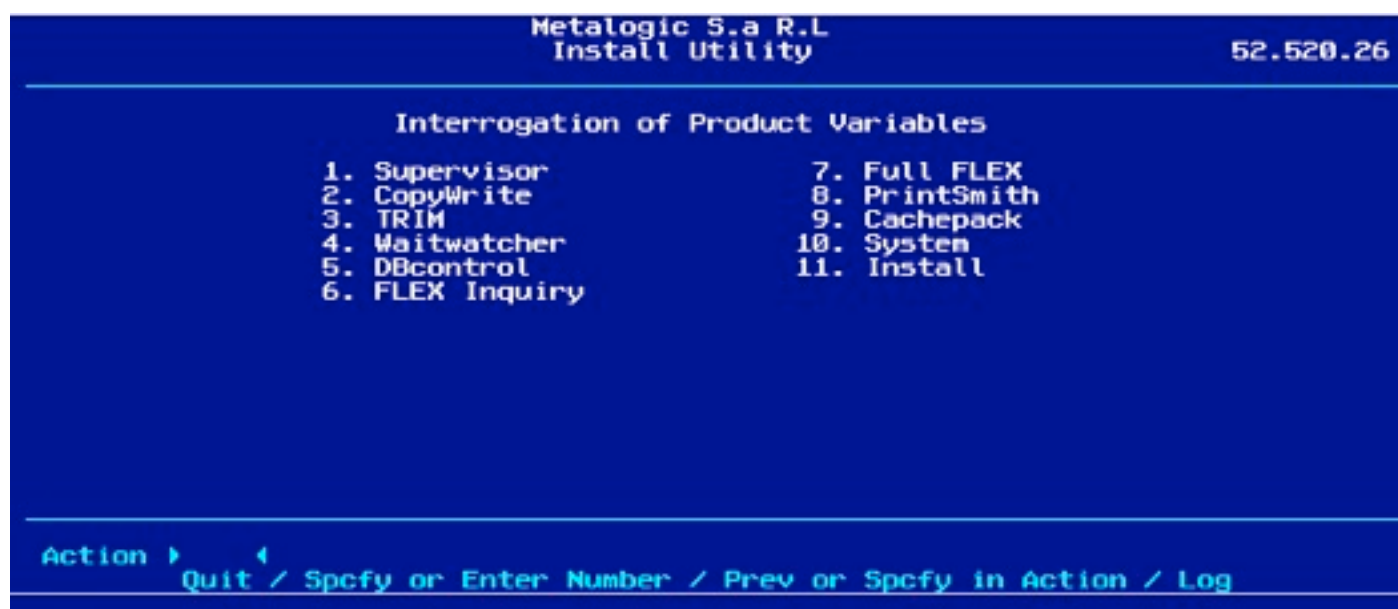
U META/INSTALL MENU

Followed by selecting item 4.



You can either enter the number of the product you want, or move the cursor over the product name and press the <spcfy> key.

Selecting Supervisor gives:



Note in the top left hand corner 'Screen 1 of 2'. This indicates that there are more config options for Supervisor than will fit on one screen.

When there are more options available on another screen the '+' character may be used to move to the next screen.

Ex:

```
Screen 2 of 2                               Metalogic S.a R.L.
                                           Install Utility
                                           52.520.26
                                           Supervisor Configuration Variables
17. SUP_NEEDNDLMSG ..... No value defined
18. SUP_NOVALIDATE ..... No value defined
19. SUP_ODTSECUSER ..... META
20. SUP_PRIORITY ..... 84
21. SUP_PWTIMEOUT ..... No value defined
22. SUP_QUEUELIMIT ..... No value defined
23. SUP_RECORDERNAME .... No value defined
24. SUP_SCHEDULEFAM ..... DISK
25. SUP_TIMERSLICE ..... No value defined
26. SUP_TLJOB ..... (IPP)TL/HANDLER ON DEV
27. SUP_UCODE ..... SUPERVISOR
28. SUP_WINDOWSECURITY .. MAXIMUM

Action >- <
          Quit / Spcfy on entry or Enter Number / - / Prev or Spcfy in Action
```

Note that '-' is now available to move back.

Selecting any entry by either <scpfy> or entering the number give more detail of the variable and allows it to be changed.

**Ex. Selecting 19 or specifying on SUP\_ODTSECUSER gives:**

```
Metalogic S.a R.L
Install Utility
52.520.26

Supervisor variable - SUP_ODTSECUSER

This is the usecode as sepecified in the
TT USE USER <user> FOR ODTSECURITY
The TT USE command is the preferred way to change this.

Currently: META
      ▶ META

Amend the value, Xmt Spaces to delete or SPCFY to return
```

**<spcfy> will return you to the previous screen without making any changes, you can change the value and transmit, or replace the value with spaces and transmit to delete the variable.**



## NewDMS

This command is only used by users of the Tape Library system.

```
U META/INSTALL NewDMS
```

Or

```
U META/INSTALL MENU
```

Followed by selecting item 5.

```
Metalogic S.a R.L.
Install Utility
52.520.26

Trim Configuration: 3

Part 3: These questions apply to TRIM's METATAPELIB DMSII database.

1. Default family for TAILORED DMSII software?  DISK  <
2. Family for ACCESSROUTINES, DMRECOVERY and  DISK  <
   DMDATARECOVERY
3. Usercode for ACCESSROUTINES, DMRECOVERY and  *    <
   DMDATARECOVERY
4. Family for DMALGOL,DMINTERFACE etc.         DISK  <
5. Usercode for DMALGOL,DMINTERFACE etc.       *    <

Action:  OK  <
         OK / Quit / Log
```

**NewDMS is intended to be used after moving to a new version of DMSII. The screen gives the opportunity to specify the location and Usercode of the new DMSII software. Once OK is entered the Install program will perform as DASDL update and compile new tailored software and a new \*METALOGIC/OPALTAPELIB. In some cases the OPALTAPELIB compile would not have been required but for safety it is always performed.**

**Important. Before installing the new DMSII software you must close the database using the command TT TP CLOSE.**

The SAVE and RESTORE variants of the NEWDMS command are only available as parameters to the Install program.

```
U META/INSTALL NEWDMS SAVE
```

Saves the data in the tape library database

The database is saved to flat files in the directory METATAPELIB/DUMP/= on the family specified for the database control file family. (Specified by config variable TL\_CFFAM. This can be checked on the Trim screen from U META/INSTALL CONFIG). Each data set is converted to a flat file: HIST; MEDIA; RULES.



If the version of METALOGIC/OPALTAPELIB4 is not valid a save will fail. When a new release of OpalTapeLib involves a change to the DASDL the Equivalent of NEWDMS SAVE ; NEWDMS RESTORE (which initializes the database) is done. If the SAVE fails it is possible to end up with an empty database or if old 'Save' files exist an old version of the database. For that reason if the save fails an error is reported and an ABORT of the install is recommended.

#### **U META/INSTALL NEWDMS RESTORE**

Restores the tape library database

The tape library database is initialised and rebuilt it from the the data in the files created by NEWDMS SAVE.

**It is recommended that a NEWDMS SAVE is performed before any change to the Unisys DMSII software.**

On a system where the secadmin secopt is set to Authorized the DMSUPPORT and Reconstruct code files for the Tape Database are marked as non executable after being compiled. Install will MP these code files to allow them to run.

NEWDMS MERGE will load data to MEDIA and RULES from files created by NEWDMS SAVE or the TP DUMP command. It will not initialise the database and will only load data for tapes where the creation timestamp is greater than that in the database. Rules in the flat file will override Rules in the database. History is not changed. Data fill be loaded from METATAPELIB/DUMP/MEDIA and METATAPELIB/DUMP/RULES. The files should be under the usercode running install and on the CONTROL file family. They can be created by U META/INSTALL NEWDMS SAVE or TP DUMP. The TP MERGE command my be used for the same function but will look for the files under the tape librarian usercode.

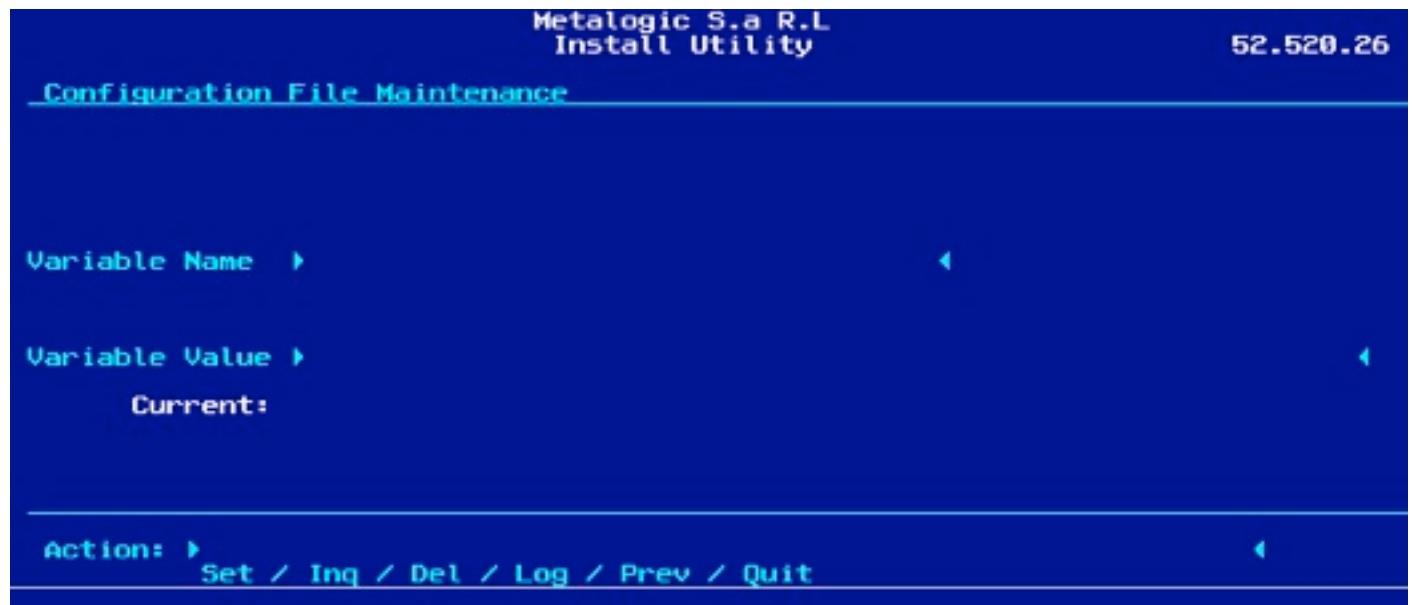
## Maint

U META/INSTALL Maint

Or

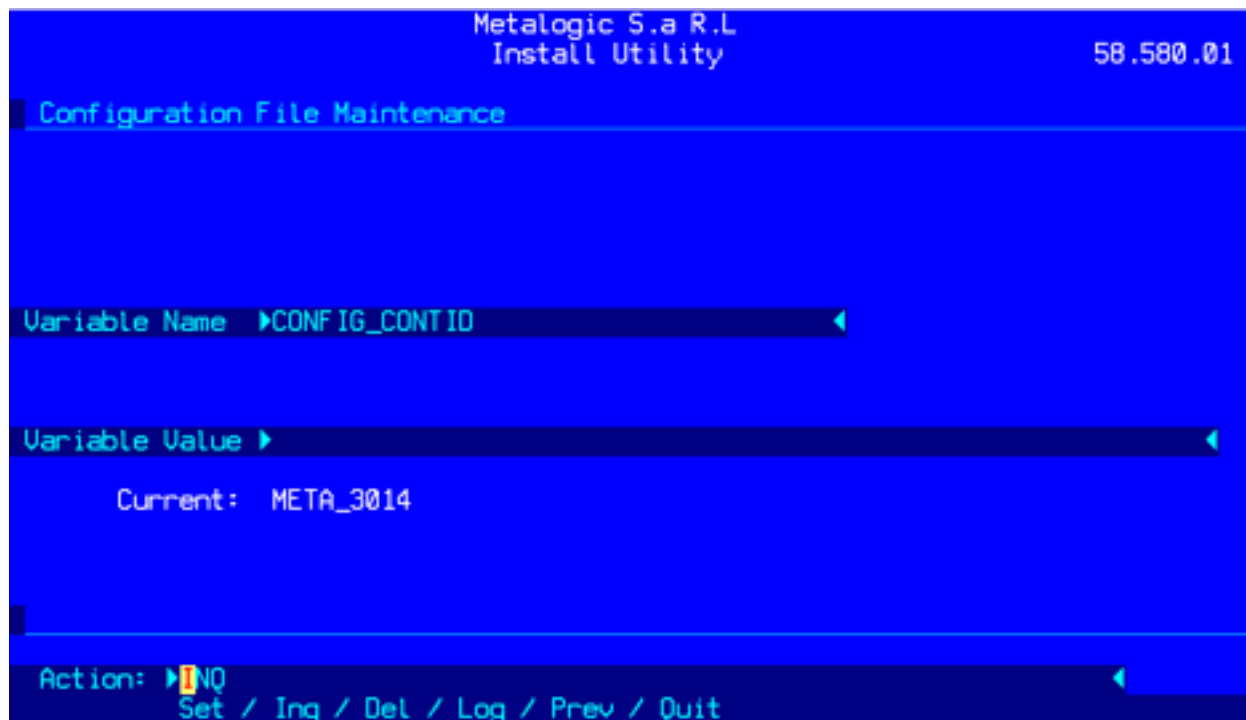
U META/INSTALL MENU

Followed by selecting item 6:



**Maint allows any non standard config variable to be set.**

An example of a non standard config variable is CONFIG\_CONTID, It holds the ID of the most recent container used to install software.



From Supervisor the following expression will return the title of that container:

Configuration File Maintenance

```
$Config_ContDir.Config&$Config_ContId.Config&" ON "&  
$Config_ContFam.Config
```

## Priority Variables

Install can apply locally defined priority and control settings for MailLib and Recorder. The values are held in the following config variables.

SUP\_RECPRH Holds the priority for Recorder

SUP\_RECCP "TRUE" if Recorder should be a control program

MAIL\_PRI Holds the priority for MailLib

MAIL\_CP "TRUE" if MailLib should be a control program.

An ODTs MENU\_PRIORITY is available to set these values.

It is held in the 'enter' file \*OPALS/MENU\_PRI which can be loaded for the release container.

**There is no Help or validity checking for Maint. It is strongly recommended that this only be used when directed by Metalogic**

## Software keys

As stated earlier, software keys are also held in the CONFIG file. These variables, however, do have a variable component in their name construction, which is the current version of MAGUS that applies to that particular key. For example,

```
KEY_53.530.05LX100 00001SUP=1C7N2AVAPJ31
```

```
KEY_53.530.05LX100 00001DBC=4Y6JUPWSH2KA
```

The above can be interpreted as:

'KEY\_<magus version><6 char style><5 digit serial><Product ID>'

The two keys above are both therefore for Magus 53.530.05, LX100 #1 , with the first being for Supervisor and the second for DBControl.

Table matching Products To Product Ids

Product	Product Id
CopyWrite	COPYWR
DBControl	DBC
Flex Inquiry	FLEXINQ
Full Flex	FLEX
Jampack	JAM
LogContexts	LOGCON
ODTControl	ODTCON
Supervisor	SUP
Trim/Tape Library	TAPELIB
WaitWatcher	WAITWATCH

If for some reason it is not possible to install keys using the Keys or Newkeys methods, it is possible to install keys using Maint.

**U META/INSTALL MAINT**

**And then setting KEY\_53.530.05LX100 00001SUP to 1C7N2AVAPJ31**

Changing or inserting new keys variables is very quick using this approach. However, regardless of whether you use the above method or the NEWKEYS command, **a restart of the MAGUS library is ALWAYS necessary to ensure that the new keys come into effect.** MAGUS will only recognise new keys at library initiation time. This can be enforced by performing the following:

**COPY \*METALOGIC/MAGUS FROM <FAMILY> TO <FAMILY>**

where <FAMILY> is the pack location of the MAGUS library as seen by the SL command.

Next,

```
SL MAGUS = *METALOGIC/MAGUS ON <FAMILY>
```

This forces a new copy of the MAGUS library to enter the mix the next time any METALOGIC software is invoked. You should at this point quit and/or restart all other METALOGIC software using the normal mechanisms.

# New Unisys DMS software.

The tape library database is very sensitive to changes in the Unisys DMS software. Here is the suggested procedure for installing a new release of Unisys DMS software.

This is only required for users of the TRIM software.

```
U META/INSTALL NEWDMS SAVE
```

```
TT TP CLOSE
```

Install the Unisys software

```
U META/INSTALL NEWDMS
```

follow the on screen instructions

If any problems are encountered after the NEWDMS procedure finishes:

```
U META/INSTALL NEWDMS RESTORE
```

# Running Metalogic Software

The Install utility will quit and restart any running Metalogic software. It will also offer to start any licensed software, which was not running. The following sections describe how to start the software manually.

## Running JAMPACK

Information on the syntax and running of JamPack is given by:

```
RUN *METALOGIC/JAMPACK ON USERPACK("HELP")
```

which produces a line printer listing of helpful information.

## "SECTORS REQUIRED" handling

To demonstrate its "SECTORS REQUIRED" handling:

Do a copy of a very large symbolic, such as SYMBOL/MCP, to a pack, e.g. MYPK, with heavy checker boarding. When the LIBRARY/MAINTENANCE gets hung, enter

```
RUN *METALOGIC/JAMPACK ON USERPACK("MYPK 504")
```

JAMPACK will run and fire off a RESERVE. When the RESERVE completes, JAMPACK will automatically remove the BADDISK file. This should allow LIBRARY/MAINTENANCE to get another row, but then it will hang again.

By entering

```
RUN *METALOGIC/JAMPACK ON USERPACK("MYPK < 10080")
```

a larger amount of space can be found.

By repeating this as the RSVP comes up, almost all of the available space can be used. JAMPACK can be safely run on all pack families including the halt-load unit and DL specified units. The COPY should be DS'ed after the test but if it did complete, remember to remove the file that it copied.

## Full Squash of a Pack

For example: To consolidate all the space on MYPK: A "Full Squash" is best done when the machine is not very busy, and it is desirable, but not essential, that the pack, e.g. MYPK, has no files open on it. This is seen from the ODT "PER PK" message. Enter:

```
RUN *METALOGIC/JAMPACK ON USERPACK("MYPK")
```



JamPack will do multiple RESERVEs until the file rows on the pack are contiguous.

## Using JAMPACK from Supervisor and WaitWatcher

Users of METALOGIC/SUPERVISOR may automatically control JAMPACK either by using the supplied OPAL programs, or by running WaitWatcher, both of which provide automatic handling of "SECTORS REQUIRED".

The supplied SUPERVISOR OPALS are available in the Metalogic supplied file:

```
OPALS/SUPERVISOR/GETTINGSTARTED
```

The relevant programs are prefixed with the identifier **JP\_**. They may be "compiled" into Supervisor's SCHEDULE file using the following command:

```
TT ENTER DEF JP_ = FROM OPALS/SUPERVISOR/GETTINGSTARTED
```

The OPALS may then be invoked by

```
TT WHEN JP_CONTROL DO JP_CONTROL
```

Please note that the WAITWATCHER program performs similar functions to the SUPERVISOR except that no OPAL programs are involved.

## Running WaitWatcher

The WAITWATCHER code file is usually called:

```
*METALOGIC/SUPERVISOR/WAITWATCHER.
```

Assuming that you have copied the files to a pack called SYSTEM, WAITWATCHER may be run by entering:

```
??RUN *METALOGIC/SUPERVISOR/WAITWATCHER ON SYSTEM
```

at the ODT (not a Remote SPO). Note the "??" WAITWATCHER will run in the background, efficiently detecting SECTORS REQUIRED hangs, and running JAMPACK when necessary.

This statement will be needed after each Halt/Load. WAITWATCHER can also be run using a WFL job with the advantage of allowing for restart after a Halt/Load, but has the disadvantage of the extra core used by the job stack. Alternatively, you might wish to make WAITWATCHER the system supervisor (using the CS command). To terminate WAITWATCHER, enter a <mixno> AX QUIT.

## Running DBControl

When you have read the documentation in DOCUMENT/DBCONTROL and are ready to run DBControl, enter the following on an ODT:

```
??RUN METALOGIC/DBCONTROL ON SYSTEM
```

where SYSTEM is the family where \*SYSTEM/= files reside. If the system responds with an error message preceded by a "#" character, it means that the terminal you are using is not a real system ODT.

To keep DBControl in the system across halt-loads enter:

```
AI + DBC = METALOGIC/DBCONTROL ON SYSTEM
```

## Running SUPERVISOR

Running SUPERVISOR can be done from CANDE or the ODT. It is quicker to do a

```
??RUN METALOGIC/SUPERVISOR ON HLPK
```

from the ODT because Supervisor re-initialises itself to avoid the overhead of an extra JOB stack.

If you wish to use the Tape Library module you should enter from any ODT

```
TT OP + TAPELIB  
TT ENTER FROM OPALS/TPDB
```

If you wish dates to be formatted in US style (DD/MM/YY) then enter

```
TT SO + USDATES
```

## Quitting Supervisor and TRIM

To QUIT SUPERVISOR for a restart, use the QUIT Command. To permanently stop it, enter:

```
TT QUIT QUIT QUIT
```

Install generates a request to restart Supervisor

```
TT QUIT SUPERVISOR
```

## Recompile & testing Opals

If you are re-installing SUPERVISOR, you should recompile and test all ODTs, DISPLAYs, and SITUATIONs after QUITting SUPERVISOR (which will automatically restart). The best way to do this is:

```
TT SAVE DEF = AS SYMBOL/OPALS  
TT ENTER FROM SYMBOL/OPALS
```

# FLEX package

## Recompile & test rules

If you are re-installing FLEX 3, you should recompile and test all rules. The best way to do this is:

```
Log on to Cande with the Rules manager usercode and accesscode
U FLEX
RULES SAVE ALL AS FLEX/RULES/ALL
DO FLEX/RULES/ALL
Repeat RULES TEST FAM <familyname>
    for each family backed up by Familymanager
```

# Keys and Config variables

Selecting “6. Non Standard Config Maintenance”, from the main menu, allows individual keys to be changed. In the following CONFIG variables, each entity is prefixed by ‘KEY\_xx.xxx.xxssssss#####’, xx.xxx.xx is the version of Magus,ssssss is the system style (trailing spaces are significant),##### is the system serial number (Leading zeroes are required) For example

## **KEY\_xx.xxx.xxssssss##### DBC**

Allows assignment of a key for the DBCONTROL product.

KEY\_53.530.05LX100 00001DBC=4Y6JUPWSH2KA

## **KEY\_xx.xxx.xxssssss##### FLEXINQ**

Allows assignment of a key for the FLEX INQUIRY product.

KEY\_53.530.05LX100 00001FLEXINQ=2U65WY2CMFVQ

## **KEY\_xx.xxx.xxssssss##### FLEX**

Allows assignment of a key for the full Flex family of products.

KEY\_53.530.05LX100 00001FLEX=V3DSHDYHDVJW

## **KEY\_xx.xxx.xxssssss##### JAM**

Allows assignment of a key for the JAMPACK product.

KEY\_53.530.05LX100 00001JAM=36AWQ7R4V2YY

## **KEY\_xx.xxx.xxssssss##### SUP**

Allows assignment of a key for the SUPERVISOR product.

KEY\_53.530.05LX100 00001SUP=1C7N2AVAPJ31

## **KEY\_xx.xxx.xxssssss##### TAPELIB**

Allows assignment of a key for the Tape Library TRIM products.

KEY\_53.530.05LX100 00001TAPELIB=13TBAYX6CITV

## **KEY\_xx.xxx.xxssssss##### WAITWATCH**

Allows assignment of a key for the WaitWatcher product.

KEY\_53.530.05LX100 00001WAITWATCH=1152JGRC7TFA

### **KEY\_XX.XXX.XXSSSSSSS##### COPYWR**

Allows assignment of a key for the CopyWrite product.

KEY\_53.530.05LX100 00001COPYWR=YKEA1RYPYN1I

### **KEY\_XX.XXX.XXSSSSSSS##### LOGCON**

Allows assignment of a key for the Log Context extension to Supervisor.

KEY\_53.530.05LX100 00001LOGCON=3UGTZ5RCUXF1

### **KEY\_XX.XXX.XXSSSSSSS##### ODTCON**

Allows assignment of a key for the CopyWrite product.

KEY\_53.530.05LX100 00001ODTCON=YMDB63YNHPDP

# Copyright

Copyright © 1979-2015 Metalogic S.à R.L., Luxembourg.  
All rights reserved.

Last revision: May 2015

METALOGIC believes that the information described in this manual is accurate and reliable, and much care has been taken in its preparation. However, no responsibility, financial or otherwise, is accepted for any consequences arising out of the use of this material. The information contained herein is subject to change. Revisions may be used to advise of such changes and / or additions.

## ACKNOWLEDGEMENTS

As always, some of the best ideas did not come from the implementers.  
To all of you who contributed, many thanks.